



SAVEO-SCAN-PKT-M22D-BT

Getting Started

Switch on and Charge your Scanner

Please switch on and charge your scanner for 3~4 hours before first use.

Please note: LED indicator will remain red until scanner has been paired with a device.

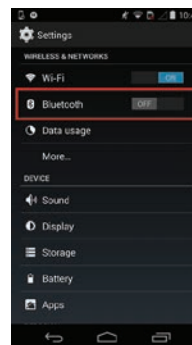
Operating Elements



Connecting via Bluetooth

Enable Bluetooth on your device

Go to your phone's homescreen and find "Settings", then "Bluetooth" and turn Bluetooth on.



Scan Profile barcodes

Please note: The scanner should only be paired with one device at a time. Before you pair your scanner to another device, please first unpair it from the device in use. Otherwise it will appear on your list of "Available Devices" but will not connect. In this case, please refer to "Unpairing your device" in this guide.

HID Profile

After you scan the Bluetooth profile barcodes below, your scanner will become visible to Bluetooth enabled devices within range.

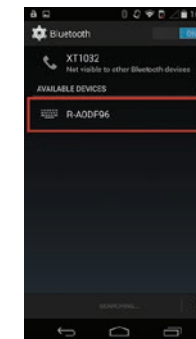
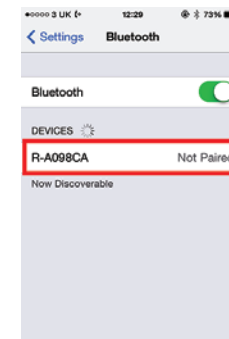


Search for devices

Your phone will automatically search for devices, Saveo Scan will appear as an external keyboard with a unique identifier number (R-xxxxxx).

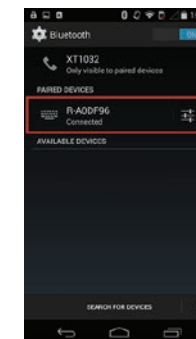
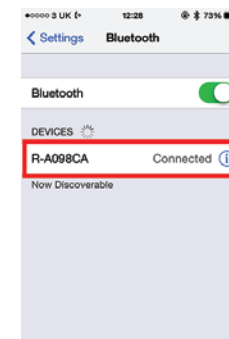
Select R-xxxxxx to connect

Select scanner from "Available Devices" and wait for pairing process to complete.



Devices are now paired

Once "Connected" is displayed, your device is paired to the scanner. Your scanner is now ready to use.



Please note: devices only need to be paired once. When they are within Bluetooth range they will automatically attempt to connect to each other. If you wish to pair to another device it is recommended you first unpair this device.

You are now connected. Start scanning.

Unpairing your device

Before connecting the scanner to another device it is recommended you first unpair from the current device. This can be done on the scanner or through the system menu on your smartphone/tablet.

Using the scanner to unpair

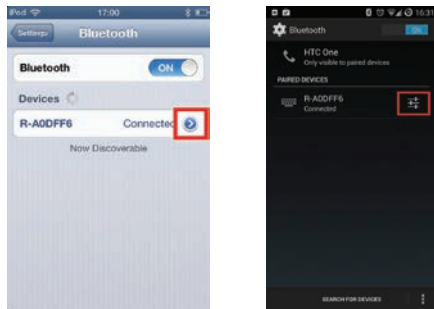
To unpair using the scanner, press and hold the left button (as illustrated) for 3-4 seconds. You will hear a notification sound and the LED will turn red to indicate it is not paired to any device.



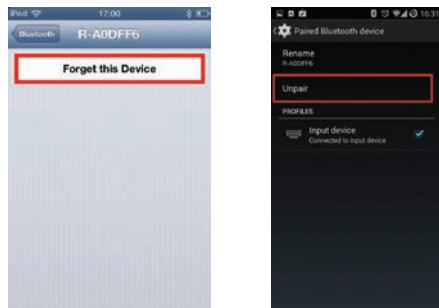
Press and hold for 3-4 seconds to unpair from device.

Unpairing on your phone

Go to the Bluetooth menu on your phone and select the option menu for scanner from list of paired devices.



Choose "Forget this Device"/"Unpair"



Operating Modes

There are two operating modes on the scanner, **Data transmission mode** and **Data Storage Mode**. Scan the appropriate barcodes when switching between these two modes. **Please note:** Switching between modes will wipe the scanner's internal memory.

Data Transmission Mode (Default)

Our Default setting is Data Transmission mode. In this mode data will be sent to smartphone/tablet directly.

To enter **Data Transmission Mode** please scan the following barcodes.

Enter Data Transmission Mode

Green/Orange LED flashes followed by 3 beeps.



Data Storage Mode

In this mode, data will be saved directly to scanner's memory. Scan **Transmit Memory Data** to receive data stored on scanner's internal memory.

To enter **Data Storage Mode** please scan the following barcodes.

Enter Data Storage Mode

Green/Orange LED flashes followed by 3 beeps.



Transmit Memory Data

Scan the following barcode to receive data stored in the scanner's internal memory.

Transmit Memory Data

Green/Orange LED flashes followed by 3 beeps.



After data is transmitted to your device it remains on the scanner's internal memory. Scan the following barcode to clear the memory if you do not wish to send this data again.

Clean Memory Data

Green/Orange LED flashes followed by 3 beeps.



Reset to Defaults

Reset Configuration to Defaults (scan from A1 to A4)

A1



A2



A3



A4



LED Indicator

LED Indicator Information	
Orange LED ON	Full charged
Orange LED (Flashing)	Charging / Low battery
Red LED ON	Offline / Out of Range
Green LED ON	Good read
Orange LED ON	Good read (Batch mode)

When the battery power is too low, the Orange LED will flash and beep once. Scanner should be charged immediately. If scanner shuts down it is recommended to charge it fully then power it back on.

Under power-saving mode, there will not be an LED indication when charging.

Sound Settings

Scan the barcodes to select whether or not the decoder issues a beep signal after a good decode. If selecting Do Not Beep after Good Decode, beeper signals are issued during parameter menu scanning and to indicate errors.

Enable (default)



Disable



Battery Level Status

Scan the following barcode to send battery level information to your device. The format is outlined in the table below.

Current Battery Level

Scan to receive the current battery level



%^4^%	80% - 100%
%^3^%	55% - 80%
%^2^%	30% - 55%
%^1^%	10% - 30%
%^0^%	under 10%

Transmission Speed

Transmission speed is dependent on your device. In order not to lose data please choose the correct speed. Mid Speed is the default.

High Speed Transmission



Mid Speed Transmission (Default)



Low Speed Transmission



Reading Mode

The default setting for reading mode is Single Scan. To choose another mode please scan the appropriate barcodes below.

Single Scan (Default)

In this mode the scanner attempts to decode when the scan button is pressed.



Motion Sensor: Full Auto Mode

In this mode the scanner attempts to decode when it senses motion.



Power Saving Mode

Power saving mode is enabled by default and will put the scanner to sleep after 1 minutes inactivity. To wake up the scanner press the trigger.

Below are the barcodes to disable/enable power saving mode.

Disable

Scan to disable power saving mode



1 Minute

Enter Power Saving Mode after 1 minutes inactivity



5 Minute

Enter Power Saving Mode after 5 minutes inactivity



15 Minute

Enter Power Saving Mode after 15 minutes inactivity



30 Minute

Enter Power Saving Mode after 30 minutes inactivity



Mobile Phone/Display Mode

This mode improves bar code reading performance with target bar codes displayed on mobile phones and electronic displays.

Disable (default)



Enable

