

Lightning fast Scanning



SAVEO-BLT-S12D Quick Start Guide

Package Contents:

- 1 x Saveo BOLT scanner (SAVEO-BLT-S12D)
- 1 x USB Type-C Device Flex Cable (SCF002)
- 1 x Charging Cradle (SPP004)
- 1 x Micro USB Device Flex Cable (SCF001)
- 2 x Uni-Device Mount Plates (SMX3MP)
- 1 x Wristloop, Acc. Bag & USB Reset Key

Contact us at:

Email:
inquire@saveoscan.com

Web:
www.saveoscan.com

US: +1-720-257-7070

UK: +44-208-099-8071

IRE: +353-1-685-4600

Limited Warranty

Saveo BOLT has an extended 2-year limited manufacturer warranty. This warranty does not cover any product which has been subject to improper use, neglect or unauthorized repair or installation. This warranty does not cover consumable parts. (Cables & batteries are consumables.)

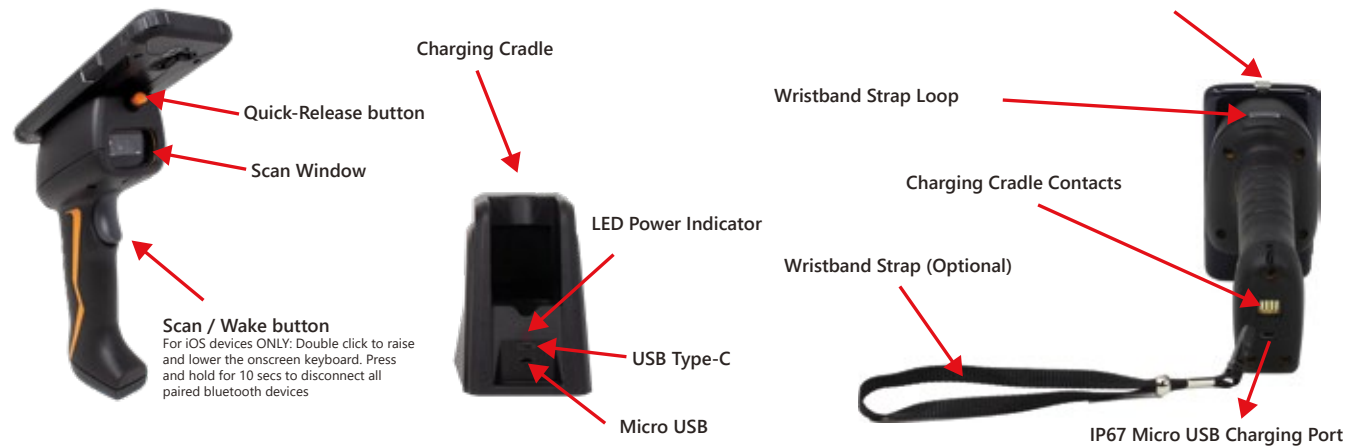
Important Safety Information

- * Never put scanner in places of extremely high temperature.
- * The included charging cradle must be used indoors only, in fully dry conditions.
- * Never damage the internal rechargeable battery. Damaging the casing of the rechargeable battery might cause explosion or fire.

* DANGER! Never directly look into the scan windows whilst the device is active. DO NOT point the beam at any persons or animals.



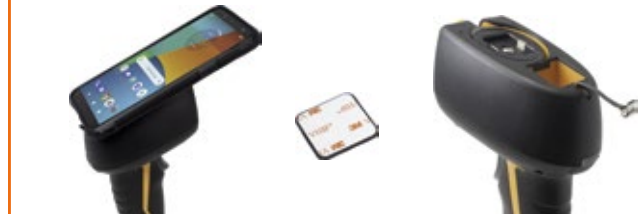
Operating Elements



Attach your phone to the scanner

Using the Universal Device Mount System

Each 3M™ VHB™ mount plate requires a clean flat surface in order to create a permanent, screwless bond. Whilst you can choose to affix this mount plate directly to the phone, we recommend affixing this plate to a rugged dual-layer or hard-shell device case as the screwless bond formed is permanent.



Affixing the mount plate

1. Clean your case or device surface with included wet and dry wipes.

2. Carefully place the clean rugged case (or device) on a flat surface.

3. Peel off 3M VHB adhesive covering paper and carefully affix the mount plate approximately 2/3 toward the lower end of your case or device surface.



Securing phone to your scanner

Simply align the square buckle to the mount seat and push down to secure your device in place.

To release and remove your device, simply press the quick release orange button.



Universal Device Mount Illustration

A custom rugged dual case (SBB005) can be fixed-mounted directly to the top of the scanner. Dual layer cases have two components, an inner silicone cover and an outer layer of hardened polycarbonate.



The Phone and silicon cover are inserted into the outershell.

The hardened polycarbonate outer shell is attached securely to the scanner via a universal mount plate, which utilizes an ultra-strong 3M™ bonding adhesive.



Connect your device using the Flex-Protect Micro-USB, USB Type-C or Lightning® cable.

Please Note: The wired connection supports charging on all connected devices and data transfer on USB OTG capable devices only.



Getting Started

Power On the scanner / set for your device cable type

1. Press the scan trigger to turn scanner on. The scanner will beep once to indicate it has powered on.
2. Please select Micro-B or Type-C mode to set charge & data for the device you wish to use with your scanner.

USB Type-C / Lightning® (Default mode)



Micro USB (B)



IMPORTANT CRADLE CHARGING INFORMATION

In order to support fast optimal device charging, Saveo BOLT's Charge Cradle has been designed to use the original manufacturers USB cable and power adaptor which was included with your specific mobile device.

Please optimize your device cradle charging experience with the appropriate cable type settings barcode, above.

In the case of using an Apple lightning device, a special cable kit add-on part (SCF003-KIT) is available to order, which includes:

- 1 x Premium USB Type-C cable (SCUSBC)
- 1 x Flex-Protect Lightning device cable (SCF003)



LED Indicators

Please refer to the table below for information regarding LED status indicator for the scanner.

Indication	LED Color	Indication
Charging		Solid Amber LED (whilst charging)
Fully Charged		Solid Green LED (whilst charging)
Bluetooth Mode (not connected)		Blinking Blue LED (whilst operating)
Bluetooth Mode (Connected)		Solid Blue LED (whilst operating)
USB Mode Only (not connected)		No LED (whilst operating)
USB Mode Only (connected)		No LED (whilst operating)
Low Battery Alert (-15% Battery)		Blinking Red LED (0.7 sec intervals)
Low Battery Alert (-8% Battery)		Blinking Red LED (0.3 sec intervals)

Connecting via wired USB (HID)

Scan the Wired USB HID Communication barcode below:



Confirm scanner is connected

Saveo BOLT is detected by your smartphone as an external keyboard. A message or an 'A' letter symbol will appear on the top of the screen to notify you that a USB Keyboard device has been connected.

Once, connected, you'll be able to scan into any app or the web browser, where the cursor is focused.



Connecting via Bluetooth (HID)

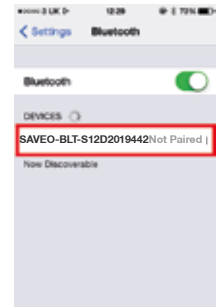
Scan the Wireless Bluetooth HID Communication barcode below:



Select SAVEO-BLT-S12D-***** to connect

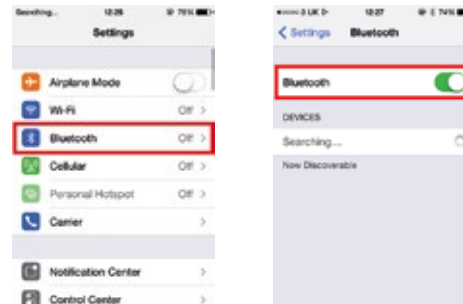
Saveo BOLT will appear as an external keyboard with a unique identifier number (SAVEO-BLT-S12D-SERIALNO).

Select scanner from "Available Devices" and wait for pairing process to complete.



Enable Bluetooth on your device

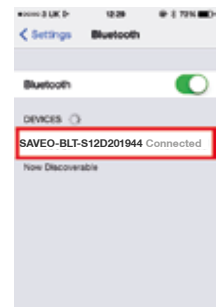
Go to your phone's homescreen and find "Settings", then "Bluetooth" and turn Bluetooth on. Your device will search for available devices within range.



Devices are now paired

Once "Connected" is displayed, your device is paired to the scanner. Your scanner is now ready to use.

Please Note: Devices only need to be paired once. When they are within Bluetooth range they will automatically attempt to connect to each other. If you wish to connect to another device, it is recommended you first unpair this device. Unpairing can be done by holding the scanner device trigger for 10 seconds.



Alternative Connection Modes

Please note: You will require a compatible application in order to use either of these connection methods.

USB V-COMM



Bluetooth SPP

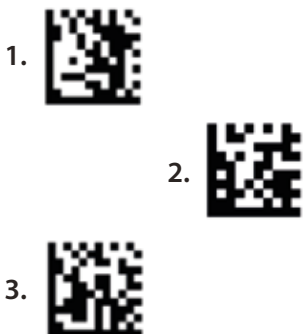
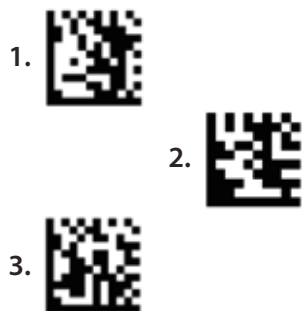


Triggers Mode

The default setting for Trigger mode is Single Scan. To choose another mode please scan the appropriate barcodes below.

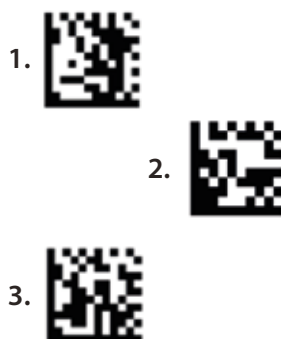
Single Scan (Default)

In this mode - the scanner attempts to decode when the scan button is pressed.



Motion Sensor: Full Auto Mode Enabled

In this mode - the scanner attempts to decode when it senses motion.



Continuous

In this mode - At power up the lighting and decoding are on all the time. The trigger is not used.

USB HID Transmission Speed (Wired)

Transmission speed is dependent on your device. In order not to lose data please choose the correct speed. Mid Speed is the default.

High Speed Transmission 

Mid Speed Transmission (Default) 

Low Speed Transmission 

Bluetooth Transmission Speed (Wireless)

Transmission speed is dependent on your device. In order not to lose data please choose the correct speed. Mid Speed is the default.

High Speed Transmission 

Mid Speed Transmission (Default) 

Low Speed Transmission 

Power Management

Power saving mode is enabled by default and will put the scanner to sleep after 1 minute of inactivity. To wake up the scanner press the trigger.

We recommend matching the Power Save timeout duration on your scanner and mobile device. Settings-Display- Timeout

Disable Scan to disable power saving mode 

1 Minute (Default) Enter Power Saving Mode after 1 minute inactivity 

3 Minutes Enter Power Saving Mode after 3 minutes inactivity 

6 Minutes Enter Power Saving Mode after 6 minutes inactivity 

12 Minutes Enter Power Saving Mode after 12 minutes inactivity 

30 Minutes Enter Power Saving Mode after 30 minutes inactivity 

1 Hour Enter Power Saving Mode after 60 minutes inactivity 

2 Hours Enter Power Saving Mode after 120 minutes inactivity 

Sleep immediately Enter Power Saving Mode immediately. 

Data Operating Modes

There are two operating modes on the scanner, **Data transmission mode** and **Data Storage Mode**. Scan the appropriate barcodes when switching between these two modes.
Please note: Switching between modes will wipe the scanner's internal memory.

Data Transmission Mode (Default)

The default setting is Data Transmission mode. In this mode data will be sent to smartphone/tablet directly.

Enter Data Transmission Mode



Data Storage Mode

In this mode, data will be saved directly to scanner's memory. Scan **Transmit Memory Data** to receive data stored on scanner's internal memory.

Enter Data Storage Mode



Data Storage Mode Function Codes

Transmit Data in Memory



Transmit Barcode Count in memory (Quantity)



Clear Data in Memory



1

Data Interface Modes

USB HID (Default)



USB V-COMM

Bluetooth HID



Bluetooth SPP

Reset to Defaults

Factory Reset to Defaults

To perform a full factory reset configuration to default, scan the barcodes below in order, 1-2:

Factory Reset Saveo BOLT Board

1.



Factory Reset S12D Scan Engine



2.

2

USB / Bluetooth Auto-Switching

USB Transmission Only (Default)



Bluetooth Transmission Only

USB / Bluetooth Auto-Switching (Forklift Mode)



Sound Settings

Scan the barcodes to select whether or not the decoder issues a beep signal after a good decode. If selecting *Disable*, beeper signals are issued during parameter menu scanning and to indicate errors.

Medium Volume (Default)



High Volume

Low Volume



Mute (all sounds)

Battery Level Status

Scan the following barcode to send the current battery level information to your device.

Current Battery Level

Scan to receive the current battery level



3

Keyboard Language Mapping

Keyboard region settings controls how the U.S. English is the default.

U.S. English (default)



Belgium



Netherlands



French



Brazil



Norway

German



CanadianFR



Poland



TurkeyQ



Croatia



Serbia

TurkeyF



Slovak



Slovenia



Portugal



Denmark



Sweden

Spain



Finland



SwissFR



Czech



Hungary



SwissDE

Italy



LatinAmerica



U.K. English



Data Delimiter Programming Guide

By default, the scanner transmits a Carriage Return command as the majority of software systems use this command as suffix.

However, you can setup other prefix and/or suffix commands to delimit your decoded barcode data.

Please note: Any newly added prefixes/suffixes are added after and in addition to any currently set ones.

Should you wish to discard any existing prefixes or suffixes, please scan "Clear All Prefix/Suffix" barcode before proceeding to set new ones with the steps below.

To Append a Prefix or Suffix to scanned data:

Step 1. Scan the Add Prefix or Add Suffix barcode.

Step 2. Determine the hex value from the ASCII Conversion Chart, for the prefix or suffix you wish to enter.

Step 3. Scan the 2 digit hex value from the Programming Chart for the character.

Step 4. (optional) Repeat previous steps for every additional prefix or suffix character you wish to add.

e.g.

To add "Ctrl+A" as prefix, Scan 'add prefix', '9';'7';'4';'1'.

To add "Ctrl+Alt+A" as suffix, Scan 'add suffix', '9';'7';'9';'4';'1'.

Please note: At most, 20 prefixes and/or 20 suffixes can be appended to scan data for use in data editing.

To set these values, scan a double-digit hexadecimal number (i.e. two bar codes) that corresponds to ASCII values.

See the Table 1 or Table 2 and Numeric Bar Codes in appendix.

Appendix.

0  SNO#0	1  SNO#1
2  SNO#2	3  SNO#3
4  SNO#4	5  SNO#5
6  SNO#6	7  SNO#7
8  SNO#8	9  SNO#9
A  SNO#A	B  SNO#B
C  SNO#C	D  SNO#D
E  SNO#E	F  SNO#F

Add Prefix 
 Add Suffix
Clear All Prefixes 
 Clear All Suffixes

Table 1.

HE X	ASCII	HE X	ASCII
00 H	NUL	10 H	NUL
01 H	NUL	11 H	NUL
02 H	NUL	12 H	NUL
03 H	NUL	13 H	NUL
04 H	NUL	14 H	NUL
05 H	NUL	15 H	NUL
06 H	NUL	16 H	NUL
07 H	NUL	17 H	NUL
08 H	BS	18 H	NUL
09 H	HT	19 H	NUL
0A H	LF	1A H	NUL
0B H	NUL	1B H	ESC
0C H	NUL	1C H	NUL
0D H	CR	1D H	NUL
0E H	NUL	1E H	NUL
0F H	NUL	1F H	NUL

Table 2.

HE X	ASCII	HE X	ASCII	HE X	ASCII	HE X	ASCII	HE X	ASCII	HE X	ASCII	HE X	Fun Key	HE X	Fun Key
20 H	Spac	30 H	0	40 H	@	50 H	P	60 H	.	70 H	p	80 H	F1	90 H	End
21 H	!	31 H	1	41 H	A	51 H	Q	61 H	a	71 H	q	81 H	F2	91 H	Page Down
22 H	"	32 H	2	42 H	B	52 H	R	62 H	b	72 H	r	82 H	F3	92 H	Right Arrow
23 H	#	33 H	3	43 H	C	53 H	S	63 H	c	73 H	s	83 H	F4	93 H	Left Arrow
24 H	\$	34 H	4	44 H	D	54 H	T	64 H	d	74 H	t	84 H	F5	94 H	Down Arrow
25 H	%	35 H	5	45 H	E	55 H	U	65 H	e	75 H	u	85 H	F6	95 H	Up Arrow
26 H	&	36 H	6	46 H	F	56 H	V	66 H	f	76 H	v	86 H	F7	96 H	Print Screen
27 H	'	37 H	7	47 H	G	57 H	W	67 H	g	77 H	w	87 H	F8	97 H	*Ctrl
28 H	(38 H	8	48 H	H	58 H	X	68 H	h	78 H	x	88 H	F9	98 H	*Shift
29 H)	39 H	9	49 H	I	59 H	Y	69 H	i	79 H	y	89 H	F10	99 H	*Left Alt
2A H	*	3A H	:	4A H	J	5A H	Z	6A H	j	7A H	z	8A H	F11	9A H	*Right Alt
2B H	+	3B H	;	4B H	K	5B H	[6B H	k	7B H	{	8B H	F12		
2C H	,	3C H	<	4C H	L	5C H	\	6C H	l	7C H		8C H	Insert		
2D H	-	3D H	=	4D H	M	5D H]	6D H	m	7D H	}	8D H	Home		
2E H	.	3E H	>	4E H	N	5E H	^	6E H	n	7E H	~	8E H	Page Up		
2F H	/	3F H	?	4F H	O	5F H	_	6F H	o	7F H	DE L	8F H	Delete		