



SAVEO-PRINT-C1

QUICK START GUIDE

DIRECT THERMAL PRINTER

www.saveoscan.com

CONTENTS

PRINTER SETUP	2
WINDOWS INSTALLATION	2
PAPER SETUP	4
MAINTENANCE & TIPS	5
LED LIGHT INDICATOR	6
MAC INSTALLATION	12
IMPORTANT TIPS	14-16

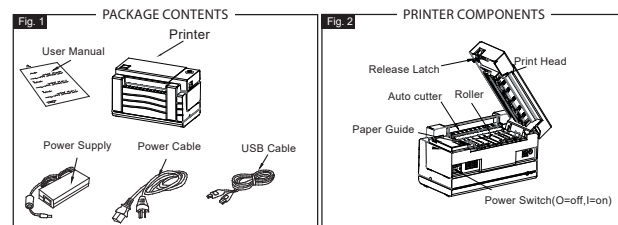
THANK YOU FOR YOUR PURCHASING

SAVEO PRINT C1



Congratulations! The **SAVEO Print C1** printer you have purchased is a high-efficiency thermal printer and does not require any ink or toner. Prints are made instantly by heating compatible labels.

Please take a moment to thoroughly review this user guide. Incorrect operation may result in damage or injury.



WARNING!

The Print Head (PH) may be very hot. Do not touch internal parts of the thermal printer immediately after using the printer.

STEP 1 PRINTER SETUP



1.Ensure the printer is OFF



2.Connect the AC Adapter to your printer and power outlet.



3.Connect the USB cable



4. Turn the power ON

STEP 2 DRIVER INSTALLATION FOR WINDOWS

Please insert the into your computer.

A dialog box may appear.

If it does,select **Open folder to view files.**

If a dialog box does not appear, open **Windows Explorer** and select the flash drive on the left side of the window. Run "SAVEO Print Driver Setup.exe", follow the installation steps.

You can also download the latest driver here: www.saveoscan.com/downloads

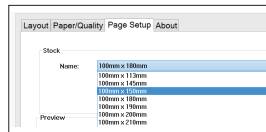
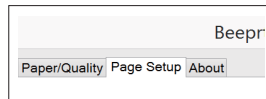
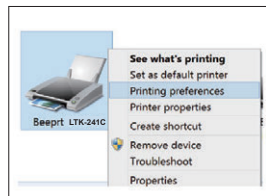
STEP 3 PRINTING SETUP

FOR WINDOWS

1.When installation is finished, open your printer page by typing Control Panel into the search box on the taskbar. Click the Control Panel search result. In Control Panel, click **Hardware and Sound** then **Devices and Printers**. Right click on your newly installed SAVEO-PRINT-C1 Label printer and choose **Printing preferences**.

2.Go to the **Page Setup** tab on the top of the dialog box, you can change setting of printer,like paper size, speed, darkness

3.From the **Name** drop-down menu, select the size of your label. A4 "x6" label is approximately 100x150mm. Click OK to save your settings and continue to Step 4 on the reverse of this page.



MAC PRINTING SETUP

For MacOS computers, please see "**MAC PRINTING SETUP**" on page 8 of these instructions.

STEP 4 PAPER SETUP



1.Ensure the printer is OFF.



3.Load the labels or tickets.



5.Turn the power ON and wait 5 seconds for the printer to initialize.

6.Press and hold green feeder button until you hear one short beep, take away your finger, the printer will begin automatic label identification. Once the printer stops, it will have identified your label size. The next time you want to put labels into the printer, instead of opening the printer, you can simply feed labels into the back of the printer.



2.Pull the release latch to open the cover.



4.Close the cover carefully.

Make sure the green guides are touching the label sides. The printable part of the label should be facing up toward you.

MAINTENANCE CLEANING THE PRINT HEAD

The printer head is a sensitive part of the printer and can be found on the upper part of the printer when open.

Caution: While the printer is running the printer head can be very hot.

1. Ensure that the power switch is OFF,remove the power cord,and open the cover as outlined above in step 4. Wait several moments to ensure that the printer head cools down.
2. Completely clean the printer head using an alcohol swab like the one provided. Any 70% Isopropyl Alcohol pad works well. Please do not use water.
3. Wait 2-3 minutes until the alcohol has completely dried, then close the cover.
4. Connect the power cord and print a test page to check if it is clean.

PRO TIPS

- Anytime you'd like to change your label size, run the automatic label identification by pressing and holding the feeder button until you hear one short beep.
- Press the green feeder button on the printer to skip a blank label.
- To run a self-test, press and hold the feeder button until you hear two short beeps.
- Avoid using poor quality labels as they can damage the printer.
- Regularly clean the printer head as outlined above, under MAINTENANCE.
- If paper is jammed, turn off the printer,and allow the printer head to cool down. Open the cover and ensure that the rubber is clean. If it is dirty,use alcohol pad to clean it. Allow the area to dry before turning the printer back on.
- Insert the printer's USB cable into the USB port on your computer every time you plug it in. This will avoid potentially creating duplicate copies of the printer on your computer.

LED INDICATOR

COLOUR OR STATUS OF LED BUTTON	EXPLANATION	SOLUTION
Green	Printer is running normally	
Flashing Green	Printer Head is overheat protection.	None. Printer will automatically resume once the printer head cools down.
Flashing Red (every 2 seconds)	1.Out of paper 2.Wrong size paper	Ensure that the labels are loaded correctly.You may need to run automatic label identification (point 6 in step4).
Flashing Red (2 times per second)	Printer cover is not fully closed	Check that the printer cover is completely closed.

PRINTER SPECS

Method.....	Direct Thermal
Resolution.....	203dpi
Max Printing Speed	150mm/s
Paper Width	48-108mm
Paper Thickness.....	0.08-0.18mm
Power Adapter.....	24V/2A
Printing Life.....	TPH 30Kmm
Operating Temperature.....	-10 to 50 C
Operating Environment Humidity.....	10-90%
Storage Temperature.....	-40 to 80 C
Storage Environment Humidity.....	5-95%
Connection.....	USB
Weight.....	1.15kg
Dimensions.....	L200mm*W120mm*H105mm

SAFETY TIPS

- The printer head can become very hot after printing labels. Do not touch the printer head until it has cooled.
- Do not bend the power cord excessively or place objects on the cord. This could result in fire or electrocution.
- Keep the printer out of reach of children.
- Use only approved accessories and do not try to disassemble or repair the unit by yourself.
- Keep the printer away from water and other objects that may destroy or damage the device.

Printer should remain unplugged when not in use for long periods of time.

SAVEO-PRINT SUPPORT

Your SAVEO PRINT C1 printer is covered by a one-year warranty. In the unlikely event that you experience any issues with your printer, please contact www.saveoscan.com for customer service to promptly help with any troubleshooting tips or service.

For any questions and/or suggestions, please email the SAVEO-PRINT team at: inquire@saveoscan.com and click on support.

For how-to videos, parts, and full warranty details, please visit www.saveoscan.com/warranty

MAC PRINTING SETUP FOR MAC OS

Please use the latest driver version for your Apple Mac.

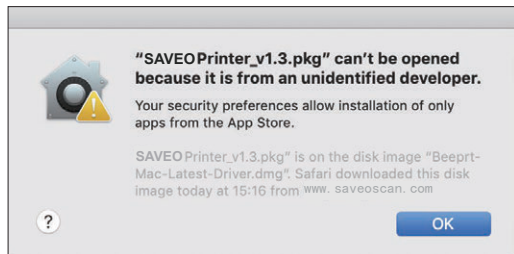
You can download the latest driver here:

<http://www.saveoscan.com/downloads>

Let us start to install SAVEO Print C1 printer driver on Mac now.

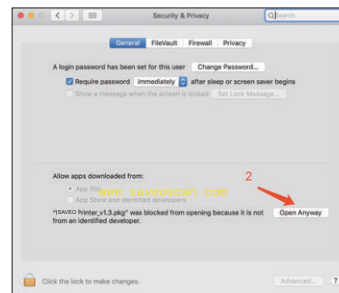
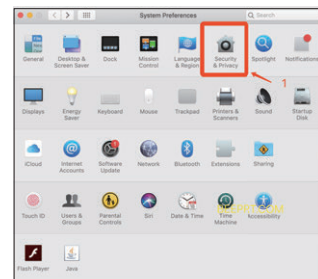
SAVEO Print C1 requires OS X 10.9 or latest.

Double click the download file, "SAVEO-Mac-Latest-Driver.dmg" If you see a warning shown below (if you do not see this warning, you can skip these two steps)



Open "System Preferences", and click on "Security & Printing".

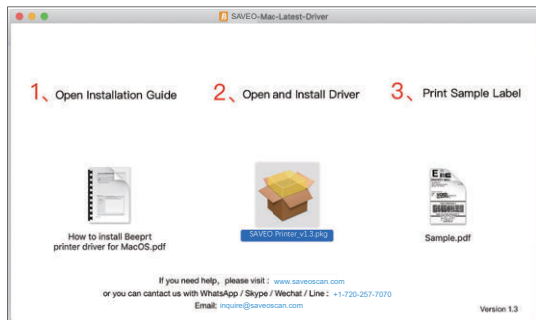
(If you don't see the warning, you can skip this step)



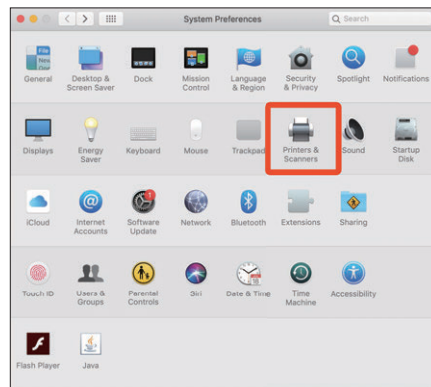
Click on "Open Anyway" button.
(If you don't see the warning, you can skip this step)

We highly recommended that you open installation guide pdf file firstly, so you can follow the steps

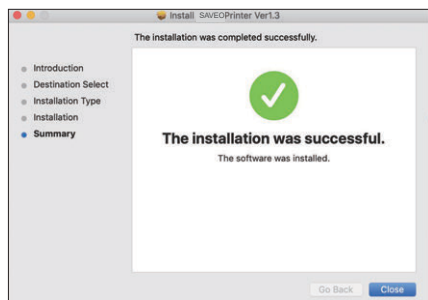
Double click "SAVEO Printer_v1.3.pkg" to begin to install driver.



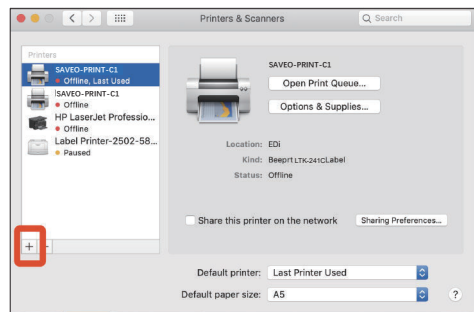
Open "System Preferences" and click on "Printers and Scanners".



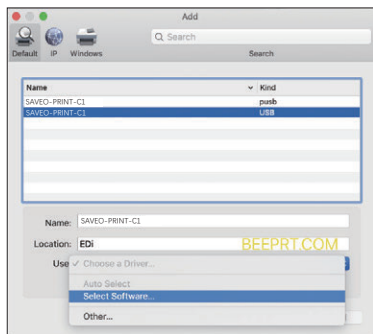
Follow the installation steps until you see " The installation was successful" window.



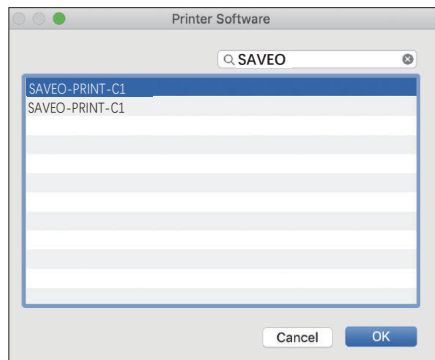
Click "+" to add a new printer.



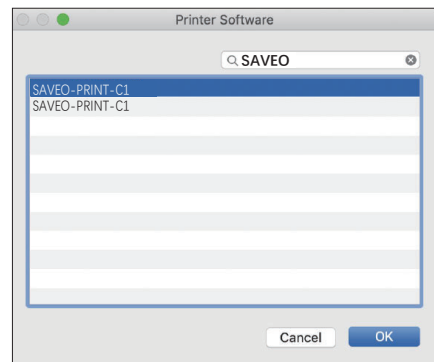
Click on "SAVEO-PRINT-C1" (or other model of SAVEO PRINT), and choose "Select Software" in the drop down menu.



Input "SAVEO" to search and choose, then click "OK".



Click on "Add" to finish (if you see a warning windows, click "repair" to continue)

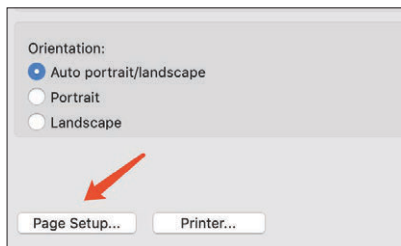


SETTING THE LABEL SIZE

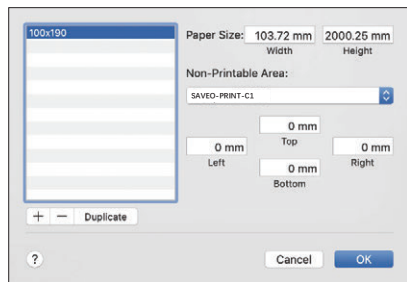
Open a PDF file in Adobe Reader (the recommended program is Adobe Acrobat Reader DC)

On the top menu, select file and then select Print.

In the Print window, click Page Setup, and choose SAVEO-Print-C1, and select Paper Size to match your label size. A4"x6" label is approximately 100x150mm.



To define a new label size, choose Manage Custom Sizes in the Paper Size dropdown menu. Click "+" to add a size, set the size, and click OK to save.



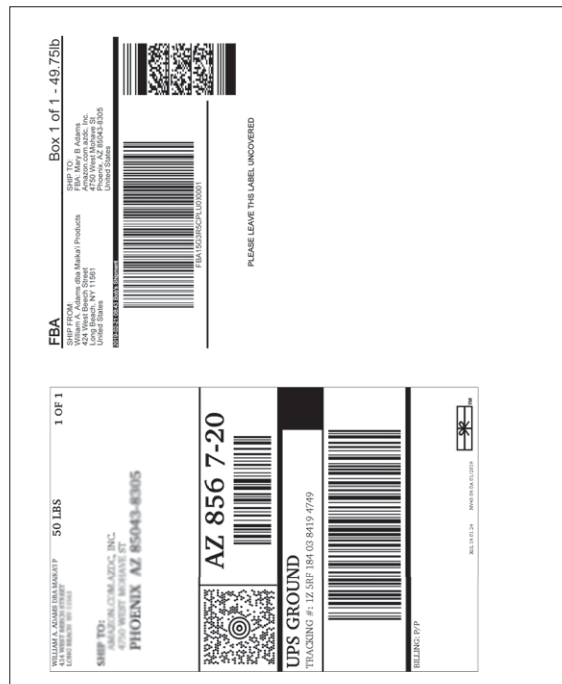
PRINTER SETTINGS, DARKNESS AND PRINT SPEED (ADVANCED)

In the Print window, click Printer, then select Printer Features. You will then be able to change the printer settings. You can also visit:

<http://www.saveoscan.com/downloads> to see how to change settings of printer on MacOS, Windows and other platforms.

HERE'S AN IMPORTANT TIP!

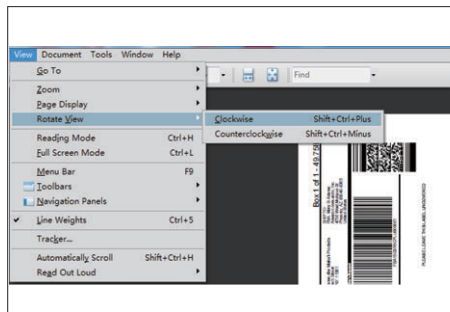
DO YOU HAVE TWO LABELS ON A PAGE LIKE THIS (8.5 x 11 inch)?



HERE'S HOW TO PRINT YOUR LABELS:

Open the PDF in Adobe Reader

From the top panel, select View > Rotate View > Clockwise so that the labels are side by side.



Next, from the top panel, select Edit > Take a Snapshot. Then click and drag over one of the labels.



Click Print

Make sure that:

You select the Label Printer from the Printer menu.

Shrink oversized pages is selected.

Choose paper source by PDF page size is unchecked.

Auto portrait/landscape is selected.

Go to Page Setup and ensure that your page size of your label. A4"X6" label is approximately 100x150mm.

Happy Printing!

Still have questions or concerns?

Most issues can be resolved very quickly!
SAVEO support is available by phone, email
and remote desktop. For setup videos, and how to set-up,
please visit:

www.saveoscan.com

www.saveoscan.com